



U.S. Small Business Administration
8(a) Certified

GSA Contract Holder
Contract: 47QTC A21D00DW

Reliant Global Technology, Inc.

Capabilities Statement

www.ireliants.com

Reliant Global Technology, Inc. specializes in the design and deployment of secure, scalable, and high-performance cloud solutions, and enterprise data management strategies. We are experts in automating and integrating big data, cloud applications, and custom workflows to drive operationally relevant digital transformations. We provide industry-leading agile software development, cloud computing, and advanced data analytics to clients in the public sector and beyond. Through the extensive technical strength of this highly skilled staff, we have developed a unique ability to pinpoint the data management needs of government agencies as well as many other types of organizations.



Core Competencies

Cloud Solutions

- We focus on enterprise-grade cloud data services. Think unmatched control, security and efficiency for application and workloads in the cloud.

Data & Analytics

- We help in data management, collection, validation, storing, and accessibility of information to fuel IA and data analytics solutions, systems and business intelligence.

Software Development

- We transform your business needs into a World-class software product. Plan tailored software solutions for your organization to achieve operational excellence and deliver them fast and error-free.

Project Management

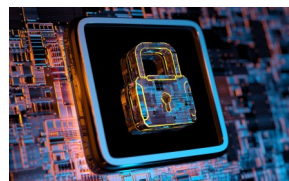
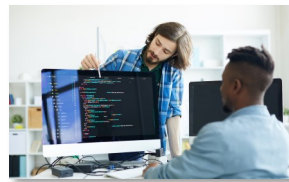
- We implement Agile methodologies to help your business become more responsive and competitive, easily plan, collaborate, organize and deliver projects of all sizes on time.

Cyber Security

- Our advisory cyber security consulting services provides clear cybersecurity strategy, advising business on data privacy, cybersecurity, and compliance requirements.

Salesforce & Service Now Support

- Explore Expert solutions in implementing integrating and managing the ServiceNow and Salesforce platform. RGT is a Premier ServiceNow & Salesforce Partners. Optimize your IT processes and integrations. Managed services leader.



Corporate Data

CAGE: 8PZL2 | **UEI:** D2UDE5BDKNY1 | **Work Area:** Nationwide
Gov. Bus. POC: Lawrence Sanusi
Phone: (281) 690-0220 | **E-Mail:** LSanusi@ireliants.com
Address: 700 Milam St Ste 1300, Houston, TX 77002 USA
Socio-Economic Status: 8(a), MBE, Small Business
Contracting Vehicle: [GSA Schedule - 47QTC A21D00DW](#)
NAICS: 541511 (P), 541512, 541513, 541519, 541611, 541612
PSC: 7030, R408, J070, D399

Government Past Performance



Department of the Air Force

Details: Developed a Microsoft BI solution report Dashboard to identify trends and enable resourcing decisions and strategic action plans at all levels driven by diverse factors and accurately gathers data, stores, and imports the data into the dashboard.



Centers for Disease Control

Details: Performed in-depth analysis of existing system capabilities, MicrobeNet rearchitecting and coordination to propose cloud modernized solution concepts for CDC stakeholder approval.



City of Austin

Details: Helped Public Safety Agencies to develop a modern analytics solution in Qlik Sense that automated a time-consuming and complicated reporting process, improved response, and operation across state level departments.

Differentiators

- Our expert consultants lay the foundation for your digital transformation across industries and technologies — from strategy through execution. Each decision we make is informed by delivering on your highest priority business outcomes.
- Customer Success - IT portfolio management, framework of analyzing, planning and executing IT portfolio.
- 12+ years of industry experience and unparalleled technical expertise.
- Proven track record in delivering complex, large scale IT solutions.
- Deep expertise in data science & data mining techniques to enable efficiency

Commercial Past Performance



Details: Developed self-guided analytics solution that uses online analytics to measure fleet performance through KPIs, visualizations, and dashboards. Our Solution provides near real-time dashboards that enable fleet managers to analyze performance and make changes to reduce costs, maximize discounts, and boost top and bottom lines.